

FORD **B-MAX**



Go Further

An ingenious idea

Inspired thinking has created new possibilities of what a compact car can do for you.



Model shown is a B-MAX Titanium in Burnished Glow metallic paint (option) with panorama roof, 17" 5-spoke alloy wheels, rear privacy glass and front and rear parking distance sensors (all options). High gloss black front grille with chrome surround, chrome side window finisher and LED day running lights are all standard.

Clever design is complemented with jewel-like details and bold, dynamic lines.



An unexpected opportunity

B-MAX's innovative access and flexibility help you make the most of the moment.



Model shown is a B-MAX Titanium in Burnished Glow metallic paint (option) with panorama roof, 17" 5-spoke alloy wheels, rear privacy glass and front and rear parking distance sensors (all options).



A perfect fit

The clever use of space offers you surprising versatility.



Model shown is a B-MAX Titanium in Burnished Glow metallic paint (option) with panorama roof, 17" 5-spoke alloy wheels, rear privacy glass, front and rear parking distance sensors, partial leather seat trim (all options) and rear bumper protection shield (option and accessory).



Fold-flat front passenger and rear seats provide a 2.35m-long cargo space in moments.



A superior finish

Thoughtful details and craftsmanship have resulted in an interior that lifts your mood.



Model shown is a B-MAX Titanium in Burnished Glow metallic paint (option) with Sony DAB digital Radio and Electronic Automatic Temperature Control (both standard) panorama roof, rear privacy glass, partial leather seat trim, Active City Stop and KeyFree System with Ford Power Starter Button (all options). Leather-trimmed steering wheel, auto-dimming rear-view mirror and cruise control are all standard.

High-quality materials and attention to detail are defining characteristics of the B-MAX.





Full of new thinking

Every part of the B-MAX is shaped by innovative design and technology.

Flexibility designed for the unexpected

Seven different seat-folding combinations, a generous 2.35m of maximum load length and an adjustable luggage compartment floor ensures the B-MAX is ready for all kinds of cargo.



Ford Easy Access Door System®

Opening the front and sliding rear doors gives you an unobstructed 1.5m wide aperture on each side, making it easier to load and unload, get in and get out. B-MAX's unique system achieves this by cleverly concealing its central strengthening pillar within the doors, rather than having it fixed into the bodyside.

Ford SYNC System with Emergency Assistance

The next generation of in-car connectivity system. The Emergency Assistance feature automatically calls the emergency services when an airbag is deployed, and you can operate most popular MP3 players, Bluetooth®-enabled phones and USB drives with simple voice commands. (Option)

*Emergency Assistance available from autumn 2012. This feature works when paired with a compatible phone that is with you when an airbag is deployed.

Active City Stop[®]*

Designed to help reduce the likelihood or consequences of your car colliding with the vehicle in front in slow-moving traffic by applying the brakes if it is detected that a collision is likely. (Option)

[®]Uses sensors.

^{*}Designed to operate at speeds below 30 km/h.

Rear-view camera

Select reverse gear and the rear-view camera comes on automatically in the navigation display, allowing you to see objects behind your car. (Option on Sony audio systems with 4.2" colour screen)



Powered by the innovative 1.0 EcoBoost engine

The diamond-like coating on the piston rings reduces friction; the turbocharger, direct injection and variable valve timing boost efficiency. The result is remarkable performance from such an economical engine. Available in 100 PS and 120 PS versions.

Make it yours

Choosing the colour and trim for your new Ford B-MAX is a defining moment – and an enjoyable one, too. You'll know what's right in an instant.



15" 12-spoke wheel cover (Standard on Studio)
15" 12-spoke wheel cover (Standard on Trend, N/A in the UK)
15" 5-spoke alloy wheel (Standard on Zetec)
16" 11-spoke alloy wheel (Option on Trend and Zetec)
16" 15-spoke alloy wheel (Standard on Titanium)
17" 5-spoke alloy wheel (Option on Titanium)



Frozen White*
Solid body colour



Moondust Silver
Metallic body colour*



Race Red
Solid body colour



Tectonic Silver*
Metallic body colour*



Blazer Blue
Solid body colour



Burnished Glow
Metallic body colour*



Mars Red
Metallic body colour*



Midnight Sky
Metallic body colour*



Panther Black
Metallic body colour*



Nautical Blue
Metallic body colour*



Ink Blue
Metallic body colour*

*Availability date TBC.
*Frozen White, metallic body colours and leather trim are options, at extra cost.
The Ford B-MAX is covered by the Perforation Protection Warranty for 12 years from the date of first registration. Subject to terms and conditions.
Note The car images used are to illustrate body colours only and may not reflect current specification. Colours and trims reproduced within this brochure may vary from the actual colours, due to the limitations of the printing processes used.

Studio

Key standard features

- Body colour bumpers
- Adjustable load floor in luggage compartment for easy loading of cargo
- Driver's seat with manual 4-way adjust
- Fold-flat front passenger seat
- One hand one motion fold-flat rear seats
- Rake- and reach-adjustable steering column
- Electrically-operated front and rear windows, with one-touch opening and closing
- Electronic Stability Programme, Emergency Brake Assist and Hill Start Assist**
- Electrically-operated door mirrors with integrated side indicator
- Centre rear seat head restraint
- Ford Easy-Fuel capless refuelling system
- Deflation Detection System for detection of low tyre pressure

- Intelligent Protection System with front*, side (thorax only), knee and curtain airbags
 - Front Passenger Airbag Deactivation*
 - Electronic Stability Programme (ESP) with electronic brake-force distribution, Emergency Brake Assist, anti-roll protection and Hill Start Assist**
 - Remote central locking with two flip keys
 - Headlight courtesy delay
- **Hill Start Assist is not available with 1.4 petrol engine.

***Note: A child seat should never be placed in the front passenger seat when the Ford vehicle is equipped with an operational front passenger's airbag. The safest place for children is properly restrained on the rear seat.**

Zetec

Additional to Studio

- 15" 5-spoke alloy wheels
- Halogen projector headlights with LED day running lights
- Front fog lights
- Chrome side window finisher
- Leather-trimmed steering wheel
- Leather-trimmed gearshift knob
- Submarine lighting and ambient LED lighting in footwell and centre stack stowage
- Manual air conditioning
- Child observation mirror
- Heated windscreen
- DAB digital radio/CD with AUX, USB connection and Bluetooth®
- Fuel computer
- Electrically-operated windows with global opening/closing
- Sunglasses holder
- Thatcham alarm

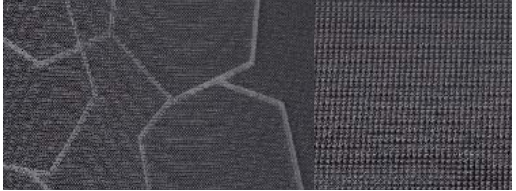
Titanium

Additional to Zetec

- 16" 15-spoke alloy wheels
- Driver's seat and centre rear seat armrests
- Driver's seat with adjustable lumbar support
- Cruise control
- Electronic Automatic Temperature Control (EATC)
- Automatic headlights and rain-sensing wipers
- Auto-dimming rear-view mirror
- Heated front seats
- Ford Power Starter Button
- High gloss upper and lower grille surrounds
- Front and rear carpet floor mats
- Sony DAB digital radio/CD with multi-functional display



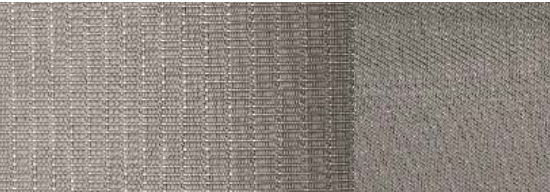
Studio and Trend
Seat bolster trim and colour
Gecko in Ebony
Seat insert trim and colour
Hexagon in Ebony



Trend
Seat bolster trim and colour
Gecko in Ebony
Seat insert trim and colour
Hexagon in Sterling Grey



Titanium/Zetec
Seat bolster trim and colour
Lux in Ebony
Seat insert trim and colour
New York in Ebony



Titanium/Zetec
Seat bolster trim and colour
Lux in Medium Light Stone
Seat insert trim and colour
New York in Medium Light Stone



Titanium/Zetec (option)
Seat bolster trim and colour
Torino partial leather in Ebony*
Seat insert trim and colour
New York in Ebony*

Fuel, performance and emissions

	Euro Stage	Trans	Maximum Power	Torque Nm (Nm with overboost)	CO ₂ emissions (g/km)	Fuel consumption			Performance		
						Urban	Extra Urban	Combined	Max. speed (mph)	0-62 mph (secs)	31-62 mph* (secs)
5 Door											
1.0 EcoBoost (100 PS (74 kW))	Euro Stage V	M5	100 (74)	170	119	42.8	65.7	55.4	109	13.2	12.1
1.0 EcoBoost (120 PS (88 kW)) with Auto-Start-Stop	Euro Stage V	M5	120 (88)	200	114	47.1	67.3	57.7	117	11.2	9.7
1.4 Duratec (90 PS (66 kW))	Euro Stage V	M5	90 (66)	128	139	35.8	57.7	47.1	106	13.8	20.4
1.6 Duratec Ti-VCT (105 PS (77 kW))	Euro Stage V	DPS6 (PowerShift)	105 (77)	150	149	32.8	55.4	44.1	112	12.1	n/a
1.5 Duratorq TDCi (75 PS (55 kW))	Euro Stage V	M5	75 (55)	190	109	58.9	74.3	68.9	98	16.5	16.5
1.6 Duratorq TDCi (95 PS (71 kW)) with DPF	Euro Stage V	M5	95 (71)	215	109	60.1	78.5	70.6	108	13.9	14.2

*In 4th gear. ^oFord test figures. ^{oo}The declared fuel consumptions and CO₂ emissions are measured according to the technical requirements and specifications of European Directive 80/1268/EEC or the European Regulation (EC) 715/2007 amended by (EC) 692/2008. Fuel consumption and CO₂ emissions are specified for a vehicle type and not for a single car. The applied standard test procedure enables to compare between different vehicle types and different manufacturers. This information is not part of any product offer made. Real-world fuel consumption can vary as the fuel efficiency of a vehicle is influenced by (individual) car configurations, driving behaviour, use of technical equipment such as A/C, as well as other non-technical factors. **Note** All vehicles are Durashift 5-speed manual unless otherwise stated. BP Ultimate, a range of advanced performance fuels, is the perfect partner to meet the most demanding needs of Ford's class-leading technology. BP Ultimate can boost power and acceleration, lower exhaust emissions and improve fuel economy, compared with ordinary fuels.

Options

	Zetec	Titanium
Option packs		
City Pack – Rear parking distance sensors and electric/heated and power-foldable door mirrors.	○	○
Titanium X Pack – Partial leather seats, heated front seats, and 17" 5-spoke alloy wheels	–	○
Panoramic Roof (includes sunblind)	–	○
Rear Privacy Glass	○	○

○ = Option, at extra cost.

These option packs are not available on Ambiente.

Illustrations, descriptions and specifications. This catalogue was correct at the time of going to print. However, Ford policy is one of continuous product development. The right is reserved to change specifications, colours and prices of the models and items illustrated and described in this publication at any time. For the latest details always consult your Ford Dealer. **Optional equipment.** Throughout this publication, wherever a feature is described as being an 'Option' or 'Option Fitment/Pack' etc, you should assume that it will be at extra cost to the base vehicle, unless specifically stated to the contrary. All models and colour combinations are subject to availability. **Note.** Some images portrayed are of a pre-production model and/or are computer generated, therefore, the design/features on the final version of the vehicle may differ in various respects. In addition, some of the features shown on the vehicles may be optional. **Note.** This brochure contains both original Ford accessories as well as a range of products from our suppliers. **+**The identified accessories are carefully selected third party supplier branded accessories which do not come with a Ford warranty but are instead covered by the third party supplier's own warranty, the details of which can be obtained from your Ford Dealer. **Note.** The Bluetooth® word mark and logos are owned by the Bluetooth SIG, Inc. and any use of such marks by Ford Motor Company is under licence. The iPod word mark and logos are the property of Apple Inc. Other trademarks and trade names are those of their respective owners.

The Government fuel figures do not express or imply any guarantee of the fuel consumption of any particular car. The cars themselves have not been tested and there are inevitably differences between individual cars of the same model. In addition, a car may incorporate particular modifications. Furthermore, the driver's style and road and traffic conditions, as well as the extent to which the car has been driven and the standard of maintenance, will affect its fuel consumption. **Insurance groups** are only as recommended by the Association of British Insurers. You should always consult your insurance adviser for confirmation.

Note Some driver assistance features and safety features described in this brochure are designed to function using sensors, whose performance may be affected under certain weather or environmental conditions.



Ford and BP – Working together to reduce fuel consumption and emissions



Collect Nectar points at participating Ford Dealers and Authorised Repairers now. So take a look at the latest Ford Service Promotions by visiting the Owner Services section within www.ford.co.uk.



Published by Ford Motor Company Limited, Brentwood, Essex, England.
Registered in England No. 235446.

FA 1571
BJN 201160. FoE HU01.
PN 279501/0312/8m/GBR en.
March 2011.

© Ford Motor Company Limited.

www.ford.co.uk